

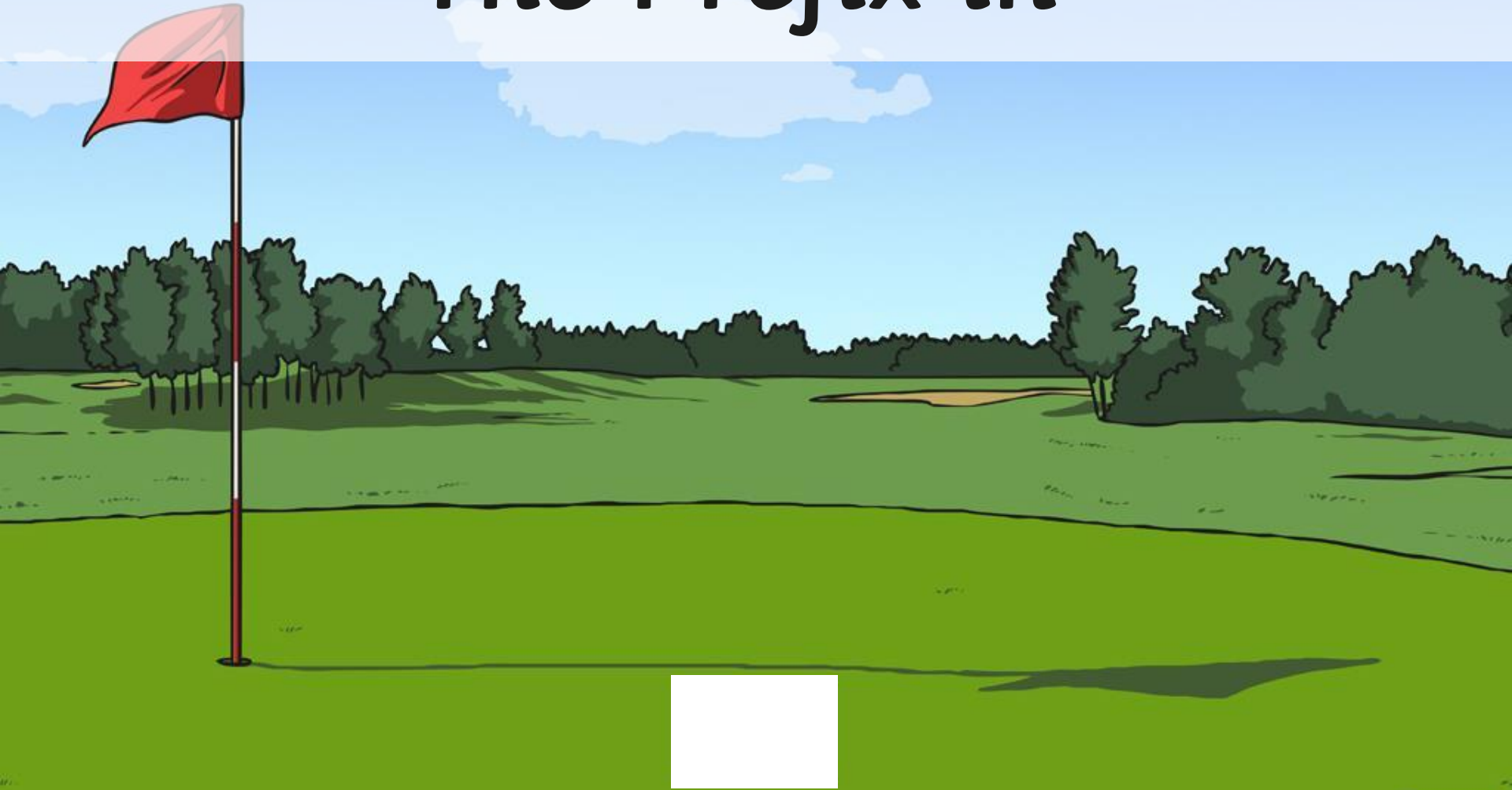


# English

Spelling, Punctuation and Grammar

The Prefix in-

# The Prefix in-



# The Prefix in-

**Introductory Activity**

**Independent Focused Activity**

**Review Activity**

**Consolidation Activity**

**Assessment**

# Aim

- I can add the prefix **in-** to root words to create new words.

## Success Criteria

- I can explain what a prefix is.
- I can explain how adding the prefix **in-** changes the meaning of words.
- I can explain spelling rules which I need to follow when adding the prefix **in-**.
- I can create and spell new words using the prefix **in-**.



# Introductory Activity

# Spelling Rules

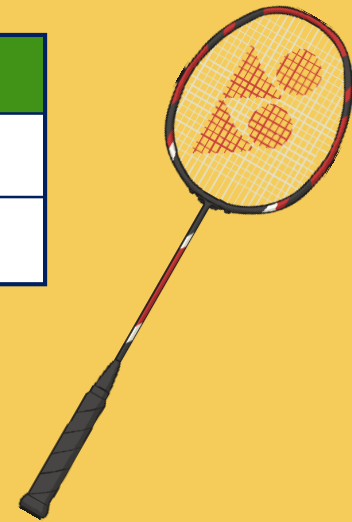
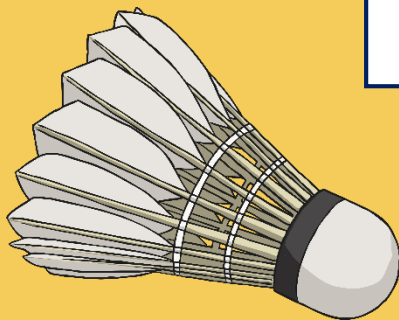


A **prefix** is added to the beginning of a word to make a new word.

Most prefixes are added to the beginning of **root** words without any changes in spelling.

Like this:

Prefix	Root Word	New Word
sub	marine	<b>submarine</b>
inter-	net	<b>internet</b>



# Spelling Rules



In this lesson we are going to focus on adding the prefix **in-**.

The prefix **in-** can mean both '**not**' and '**in/into**'.

In the words we are going to learn about today the prefix will mean '**not**'.

There are some spelling rules we need to follow when adding the prefix **in-**.

As always, there are exceptions to these rules but they are a good starting guide.

# Spelling Rules



Here's a new rule about adding the prefix **in-**

If you are adding the prefix **in-** before a root word that starts with **l**, **in-** becomes **il-**.

Like this:  
in + legal = **illegal**  
in + legible = **illegible**

How does the prefix change the meaning of the words?

The referee blew the whistle for an **illegal** tackle.

The sponsorship on the football shirt was nearly **illegible**.



# Spelling Rules



Here's another rule about adding the prefix **in-**

If you are adding the prefix **in-** before a root word that starts with **m** or **p**, **in-** becomes **im-**.

Like this:  
in + mature = **immature**  
in + possible  
= **impossible**

How does the prefix change the meaning of the words?

Adanna was a young **immature** golf player but she had a bright future ahead of her.

It was **impossible** to score a point against the best table tennis player.

# Spelling Rules



Here's another rule about adding the prefix **in-**

If you are adding the prefix **in-** before a root word that starts with **r**, **in-** becomes **ir-**.

Like this:  
in + recoverable  
= **irrecoverable**  
in + responsible  
= **irresponsible**

How does the prefix change the meaning of the words?

The fans knew that the 10–0 score line was **irrecoverable**.

The fans were irritated that their star player was injured because of an **irresponsible** tackle.

# Spelling Rules



Here's a final rule about adding the prefix **in-**

Sometimes you just add the prefix **in-** before a root word without any changes.

Like this:  
in + active = **inactive**  
in + correct = **incorrect**

How does the prefix change the meaning of the words?

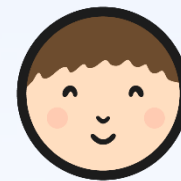
Shannon had been **inactive** for the day so she decided to go for a run.

Jayden explained that it was **incorrect** to pass the ball forward when playing rugby.

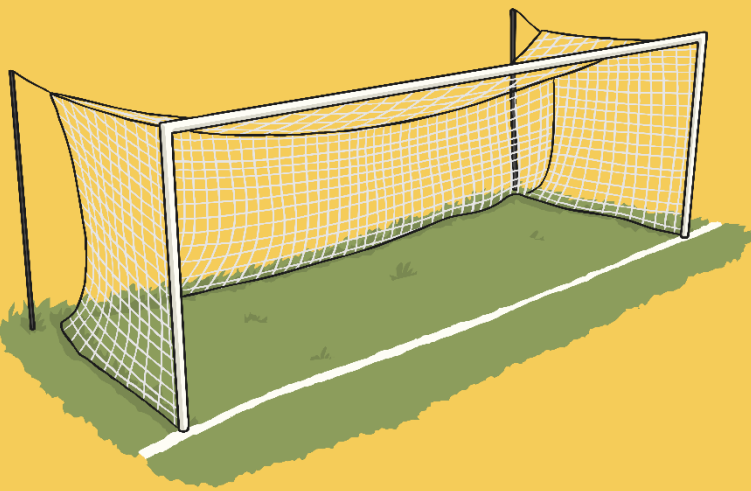


# Independent Focused Activity

# Applying Spelling Rules When Adding the Prefix in-



Work on your own to complete the **Applying Spelling Rules When Adding the Prefix in- Activity Sheet**.



## Applying Spelling Rules When Adding the Prefix in-

**Spelling Rule**  
 If you are adding the prefix in- before starts with **l**, in- becomes **il-**.  
 If you are adding the prefix in- before starts with **m** or **p**, in- becomes **im-**.  
 If you are adding the prefix in- before starts with **r**, in- becomes **ir-**.  
 Sometimes, if none of the other rules the prefix in- before a root word with

1. Use the spelling rules and a dictionary

Root word	Root word with the prefix in- added
accessible	
polite	
legal	
destructible	
logical	
complete	

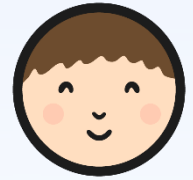
## Applying Spelling Rules When Adding the Prefix in-

2. Fill in the gaps in these sentences using the new words with the prefix in- added:
- a) It is illegal for football stadiums to be \_\_\_\_\_ to wheelchair users.
  - b) Her shin pads were missing so her kit was \_\_\_\_\_.
  - c) The player was \_\_\_\_\_ to the referee.
  - d) The football team looked very strong and \_\_\_\_\_.
  - e) The referee gave a red card for an \_\_\_\_\_ tackle.
  - f) The players kept scoring in their own goal which was \_\_\_\_\_.



# Review Activity

# Bouncing Anagrams



Can you remember what the prefix **in-** means?

Can you remember any of the spelling rules we have learnt about adding the prefix **in-**?



## Spelling Rule

## Example Words

If you are adding the prefix **in-** before a root word that starts with **I**, **in-** becomes **il-**.

in + legal  
= **illegal**

If you are adding the prefix **in-** before a root word that starts with **m** or **p**, **in-** becomes **im-**.

in + possible  
= **impossible**

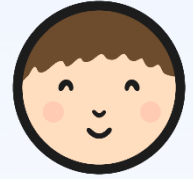
If you are adding the prefix **in-** before a root word that starts with **r**, **in-** becomes **ir-**.

in + regular  
= **irregular**

Sometimes, if none of the other rules apply, you just add the prefix **in-** before a root word without any changes.

in + active  
= **inactive**

# Bouncing Anagrams



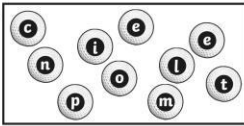
Work on your own to complete the **Bouncing Anagrams Activity Sheet**.

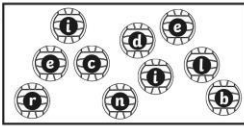


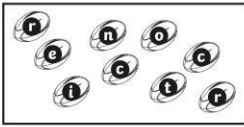
**Bouncing Anagrams**

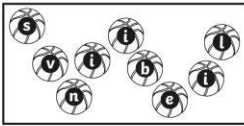
I can add the prefix in- to root words to create new words.

1. For each bouncing anagram unscramble the words to discover which prefix in- word it is spelling and tick the correct answer.

a)  indefinite  incomplete

b)  incredible  incapable

c)  incorrect  indecent

d)  invisible  inactive





# Consolidation Activity

# Root Word Sort



Match the root word to the rule you would need to follow when adding the prefix

passable

expensive

reversible

legitimate

logical

credible

possible

resistible

If you are adding the prefix **in-** before a root word that starts with **I**, **in-** becomes **il-**.

If you are adding the prefix **in-** before a root word that starts with **m** or **p**, **in-** becomes **im-**.

If you are adding the prefix **in-** before a root word that starts with **r**, **in-** becomes **ir-**.

Sometimes, if none of the other rules apply, you just add the prefix **in-** before a root word without any changes.

# Assessment

# Mini Test



Use all of the information you have learned and practised about the prefix **in-**.

Work on your own to complete the prefix **in-** **Mini Test**.



Name:  Date:

**The Prefix in- Mini Test**

1. Explain how adding the prefix in- changes the meaning of words.

\_\_\_\_\_

\_\_\_\_\_

\_\_\_\_\_

2. The root words in Column A need the prefix in- adding to them. Fill in the Column B.

	Column A	Column B
a)	reversible	
b)	logical	
c)	credible	
d)	possible	

3. For each of the above root words, explain the rule you used to change it into an in- prefix word.

Word	Rule Used
a) reversible	_____
b) logical	_____
c) credible	_____
d) possible	_____

10  
total marks

2 marks

4 marks

4 marks

total for

# Application Activity



Use all of the information you have learned and practised about the prefix **in-**.

Work on your own to complete the **Application Activity**.



## Application Activity

1. Think about a sport you are interested in, it can either be one you like playing or watching. Describe the sport using as many in- prefixes as possible. An opener has been given.

It is **impossible** not to love the sport of...

# Aim

- I can add the prefix **in-** to root words to create new words.

## Success Criteria

- I can explain what a prefix is.
- I can explain how adding the prefix **in-** changes the meaning of words.
- I can explain spelling rules which I need to follow when adding the prefix **in-**.
- I can create and spell new words using the prefix **in-**.

